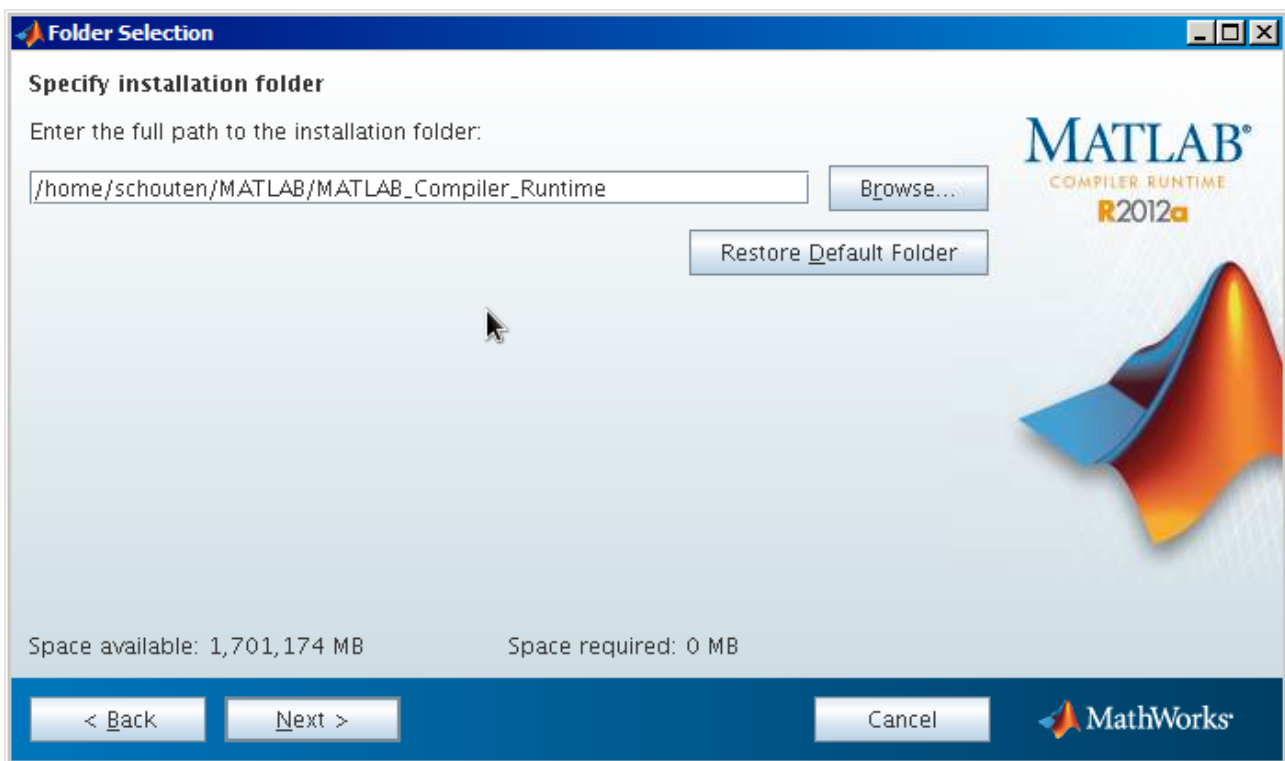


## Fix1.06 on corleone

1. Download fix to your home folder.
  1. cd
  2. wget <http://www.fmrib.ox.ac.uk/~steve/ftp/fix.tar.gz>
  3. echo "tar -zxf fix.tar.gz" | qsub -cwd -S /bin/bash
2. Install MATLAB Compiler Runtime
  1. mkdir tmp
  2. cp fix1.06/compiled/Linux/x86\_64/MCRInstaller.zip tmp
  3. unzip tmp/MCRInstaller.zip
  4. cd tmp
  5. ./install
  6. Select /home/yourname/MATLAB/MATLAB\_Compiler\_Runtime



7. copy/screenshot the Product Configuration notes. You will need these!
8. Use your favorite editor to open ~/.bashrc and add the paths from the Product configuration notes; for example

#Install MATLAB runtime compiler

```
LD_LIBRARY_PATH=/home/schouten/MATLAB/MATLAB_Compiler_Runtime/v717/runtime/glnxa64:/home/schouten/MATLAB/MATLAB_Compiler_Runtime/v717/bin/glnxa64:/home/schouten/MATLAB/MATLAB_Compiler_Runtime/v717/sys/os/glnxa64:/home/schouten/MATLAB/MATLAB_Compiler_Runtime/v717/sys/java/jre/glnxa64/jre/lib/amd64/native_threads:/home/schouten/MATLAB/MATLAB_Compiler_Runtime/v717/sys/java/jre/glnxa64/jre/lib/amd64/server:/home/schouten/MATLAB/MATLAB_Compiler_Runtime/v717/sys/java/jre/glnxa64/jre/lib/amd64:${LD_LIBRARY_PATH}  
XAPPLRESDIR=/home/schouten/MATLAB/MATLAB_Compiler_Runtime/v717/X11/app-defaults  
export LD_LIBRARY_PATH XAPPLRESDIR
```

**If you haven't already, also add the following line to setup FSL in .bashrc:**  
**module load fsl/5.0.4**

Save your .bashrc file and close the editor. This will automatically have effect the next time you log into corleone. For now source your bashrc file by typing "source ~/.bashrc" into the terminal.

### 3. Setup fix

open ~/fix1.06/settings.sh in your text editor and enter the following information according to your setup/name

```
# Point this variable at an installed MATLAB compiler runtime. This
# MUST be the same as the version given in the file MCR.version
# (which is populated when the software is compiled).
FSL_FIX_MCRROOT=/home/schouten/MATLAB/MATLAB_Compiler_Runtime

# This variable selects how we run the MATLAB portions of FIX.
# It takes the values 0-2:
# 0 - Try running the compiled version of the function
# 1 - Use the MATLAB script version
# 2 - Use Octave script version
FSL_FIX_MATLAB_MODE=0
```

### 4. Setup R

1. Make sure R is pointed to a folder in your home directory to look for packages, e.g., by installing a package at the R prompt (open R by typing "R" in the terminal):  
install.packages('party'), close R afterwards by typing q() at the R prompt. Then go to the package folder:
2. cd ~/R/x86\_64-redhat-linux-gnu-library/2.15/
3. Download R2.15 packages from my google drive with exactly:  
wget --no-check-certificate https://googledrive.com/host/0B1hes-P-7rIFNVN3c1ZOdXdhSFk  
-O R2.15\_fix\_packages.tar.gz
4. tar -zxf R2.15\_fix\_packages.tar.gz; rm R2.15\_fix\_packages.tar.gz;

### 5. Final)

You should now be ready to run fix on the cluster, e.g.,

```
echo "~/fix1.06/fix ~/DATA/YOURFEAT.feas ~/fix1.06/training_files/Standard.RData 20 -m" | qsub  
-V -cwd -S /bin/bash
```